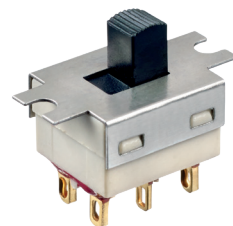


G series

Slide switches • telecom grade



DISTINCTIVE FEATURES

Panel and PC mount models

6 actuator lengths

Wide variety of contact materials



ELECTRICAL SPECIFICATIONS

- Max. current/voltage rating with resistive load :
 - silver contacts (codes 1 or 2) : 3 A 30 VDC
 - gold plated brass contacts (code 0) : 0.4 VA 20 VAC or DC max.
- Initial contact resistance : 10 mΩ
- Insulation resistance : 1,000 MΩ min.
- Dielectric strength : 1,000 Vrms 50 Hz min.
- Electrical life with resistive load :
 - silver contacts (codes 1 or 2) : 2 positions : 40,000 cycles;
3 positions : 20,000 cycles
 - gold plated brass contacts (code 0) : 60,000 cycles (0,4VA max.)



GENERAL SPECIFICATIONS

- Travel : 2.20 mm (.086), except on model **GN3...** : 2.60 mm (.102)
- Operating temperature : -30 °C to +85 °C (-22 °F to +185 °F)
- Recommended soldering : 300 °C (572 °F) 5 sec. max.

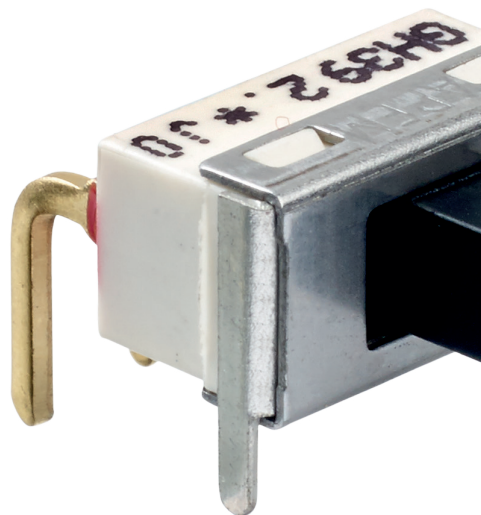


MATERIALS

- Case : PA, glass filled
- Actuator : PBT, glass filled
- Cover : stainless steel
- Contacts
 - 0 : brass, gold plated
 - 1 : silver
 - 2 : silver, gold plated
 - 5 : special contact, lower rating, minimum quantity : consult factory
- Terminal seal : epoxy

APEM products may be recycled at end-of-life for the re-claiming of valuable metal components.

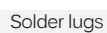
The company reserves the right to change specifications without notice.



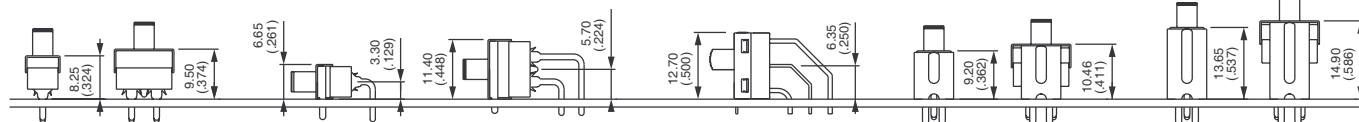
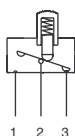
Slide switches • telecom grade



SOLDER LUG MODEL



Straight PC





BUILD YOUR PART NUMBER

| BASIC PART NUMBER | | | | | | | | | | | |
|--------------------------------|-------------------------------|---|----------------------------|-------------------|----------------------------------|----------------------|----|-------------------|-----------------------------|----|-----------------------------------|
| G | | | | | | | | | | | |
| SERIES | | ACTUATORS | | NUMBER OF POLES | | ELECTRICAL FUNCTIONS | | | TERMINALS | | |
| | | C | 3.50 mm (.137) | 3 | Single pole | 6 | ON | - | ON | S0 | Solder lugs |
| | | H | 5.10 mm (.200) Standard | 4 | Double pole | 9 | ON | OFF | ON | P0 | Straight PC |
| | | L | 6.40 mm (.251) | | | | | | | W0 | Right angle, horizontal |
| | | B | 7.65 mm (.301) | | | | | | | WW | Right angle, vertical |
| | | E | 9.10 mm (.358) | | | | | | | Y0 | Straight PC with short bracket |
| | | N | 9.50 mm (.374) | | | | | | | Y4 | Straight PC with tall bracket |
| | | Types L, B and E for single pole models only. | | | | | | | | | |
| OPTIONS | | | | | | | | | | | |
| | | | | | | | | | | | |
| CONTACT AND TERMINAL MATERIALS | | | | SPECIAL OPTIONS 1 | | | | SPECIAL OPTIONS 2 | | | |
| 0 | Brass, gold plated | | | 00 | Standard model | | | 00 | No epoxy seal | | |
| 1 | Silver | | | 10 | Switch without ground plate | | | 01 | Epoxy sealed terminals | | |
| 2 | Silver, gold plated | | | 11 | 10.35 mm (.407) PC terminals | | | 10 | Extended terminals | | |
| 5 | Special contact, lower rating | | | 12 | Same as 11, without ground plate | | | 11 | Same as 10, with epoxy seal | | |



ABOUT THIS SERIES

On the following pages, you will find successively basic part numbers of switches and options in the same order as in above chart.

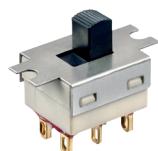


Notice : please note that not all combinations of above numbers are available. Refer to the following pages for further information.

G series

Slide switches • telecom grade

SOLDER LUG TERMINALS



Single pole Double pole

| | | | | |
|--------|--------|----|-----|----|
| GH36S0 | GH46S0 | ON | - | ON |
| GH39S0 | GH49S0 | ON | OFF | ON |

STRAIGHT PC TERMINALS



Single pole Double pole

| | | | | |
|--------|--------|----|-----|----|
| GH36P0 | GH46P0 | ON | - | ON |
| GH39P0 | GH49P0 | ON | OFF | ON |

RIGHT ANGLE TERMINALS - HORIZONTAL



Single pole Double pole

| | | | | |
|--------|--------|----|-----|----|
| GH36W0 | GH46W0 | ON | - | ON |
| GH39W0 | GH49W0 | ON | OFF | ON |

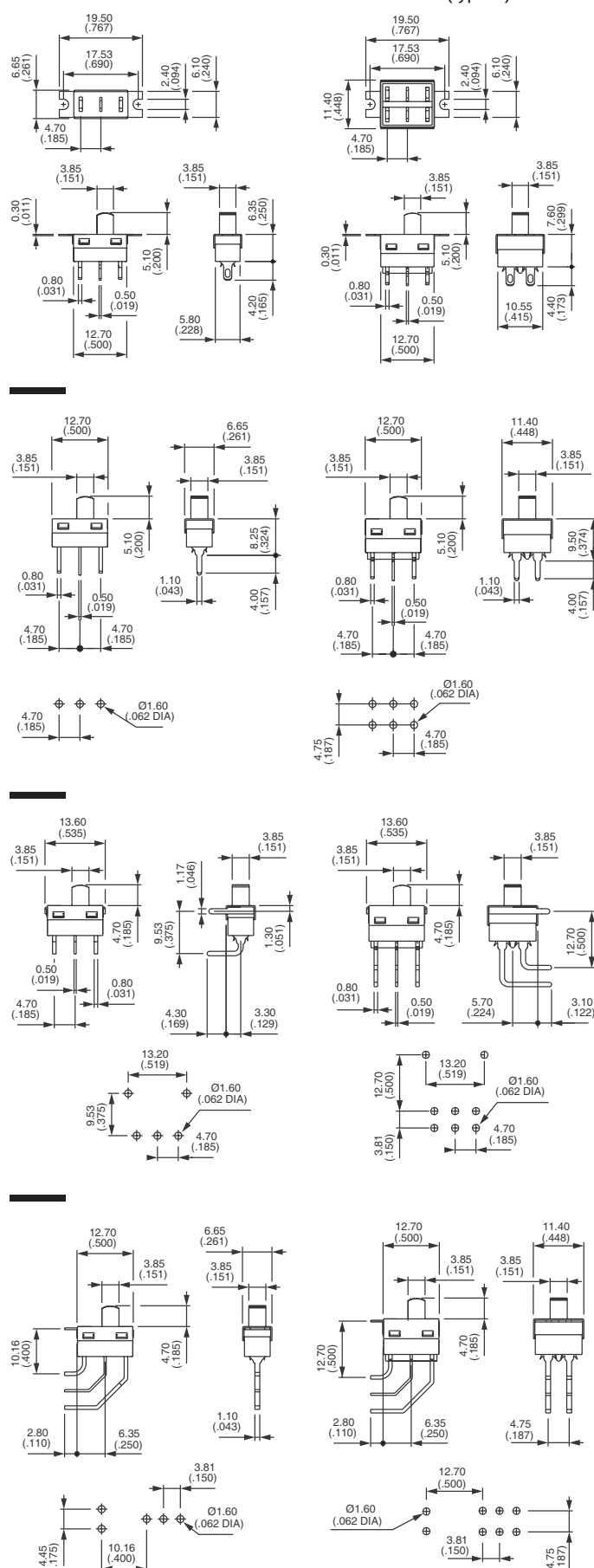
RIGHT ANGLE TERMINALS - VERTICAL



Single pole Double pole

| | | | | |
|--------|--------|----|-----|----|
| GH36WW | GH46WW | ON | - | ON |
| GH39WW | GH49WW | ON | OFF | ON |

Shown with standard actuator (type H)



STRAIGHT PC TERMINALS SHORT BRACKET : Y0



Single pole Double pole

| | |
|--------|--------|
| GH36Y0 | GH46Y0 |
| GH39Y0 | GH49Y0 |

ON - ON
ON OFF ON

STRAIGHT PC TERMINALS TALL BRACKET : Y4

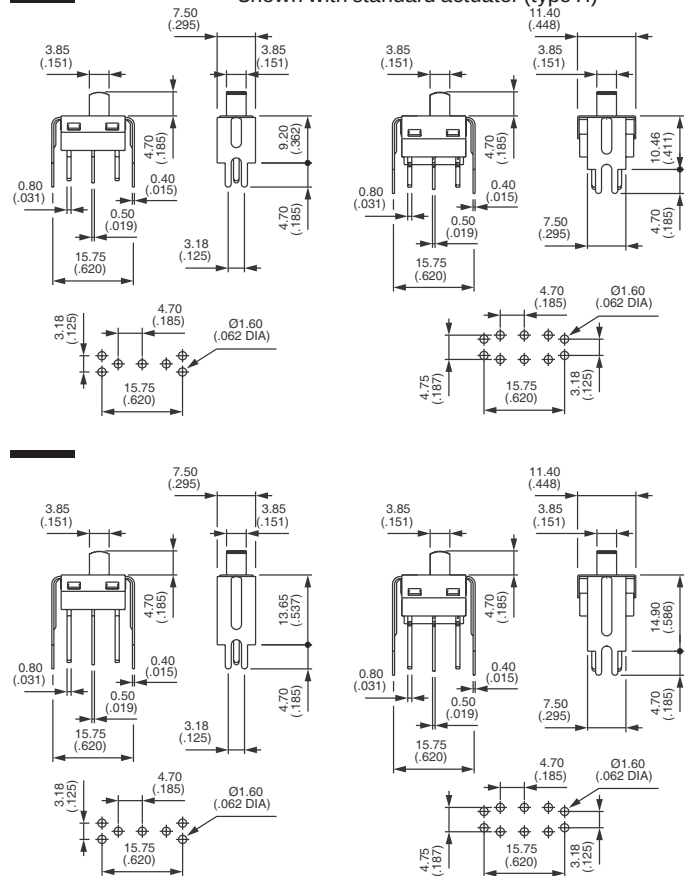


Single pole Double pole

| | |
|--------|--------|
| GH36Y4 | GH46Y4 |
| GH39Y4 | GH49Y4 |

ON - ON
ON OFF ON

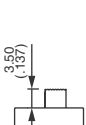
Shown with standard actuator (type H)



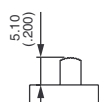
ACTUATORS

For a different actuator, replace second digit (H) of basic part number with one of the following codes.

- ⓘ Dimensions below are for solder lug (S0) and straight terminals (P0) models.
For other models (WO - WW - Y0 - Y4), height is less 0.4 mm (.015).

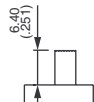


C



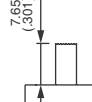
H

Standard



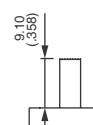
L

*



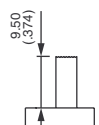
B

*



E

*



N

* For single pole only

G series

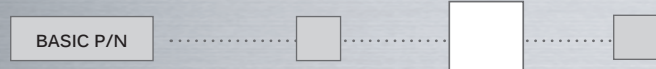
Slide switches • telecom grade

CONTACT AND TERMINAL MATERIALS

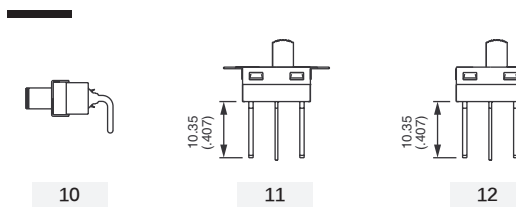


- 0 Brass, gold plated
- 1 Silver
- 2 Silver, gold plated
- 5 Special contact, lower rating, minimum quantity : consult factory

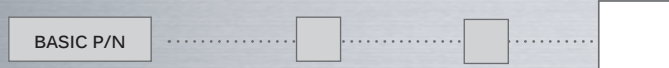
SPECIAL OPTIONS 1



- 00 Standard switch as presented on previous pages
- 10 Switch without ground plate
For right angle only (W0 and WW models)
- 11 10.35 mm (.407) long PC terminals
- 12 10.35 mm (.407) long PC terminals without ground plate



SPECIAL OPTIONS 2



- 00 No epoxy seal
- 01 Epoxy sealed terminals
(compulsory on solder lug models)
- 10 Extended terminals
For vertical right angle (WW models)
- 11 Extended terminals as above, with epoxy seal

